

Double Wing STB LIGHT Line Acoustic Door

Noise Control **R_{w,P} 47 dB** **in accordance with DIN EN ISO 10140-2**

- | | | |
|---|--|--|
| <ul style="list-style-type: none"> * Air Tight * Rain and fire water tight * Wind tight * Pressure resistant * Explosion protection * Stainless steel | <p>up to classification 3</p> <p>up to classification 1</p> <p>up to classification 4</p> <p>up to 5 kPa</p> <p>up to zone 1/21</p> | <p>in accordance with DIN EN 12426</p> <p>in accordance with DIN EN 12425</p> <p>in accordance with DIN EN 12424</p> <p></p> <p>in acc. with DIN EN 1127-1 or ATEX 94/9/EG</p> |
|---|--|--|

Range of Dimensions: **Width from 1375 mm to 4000 mm**
Height from 1750 mm to 4000 mm

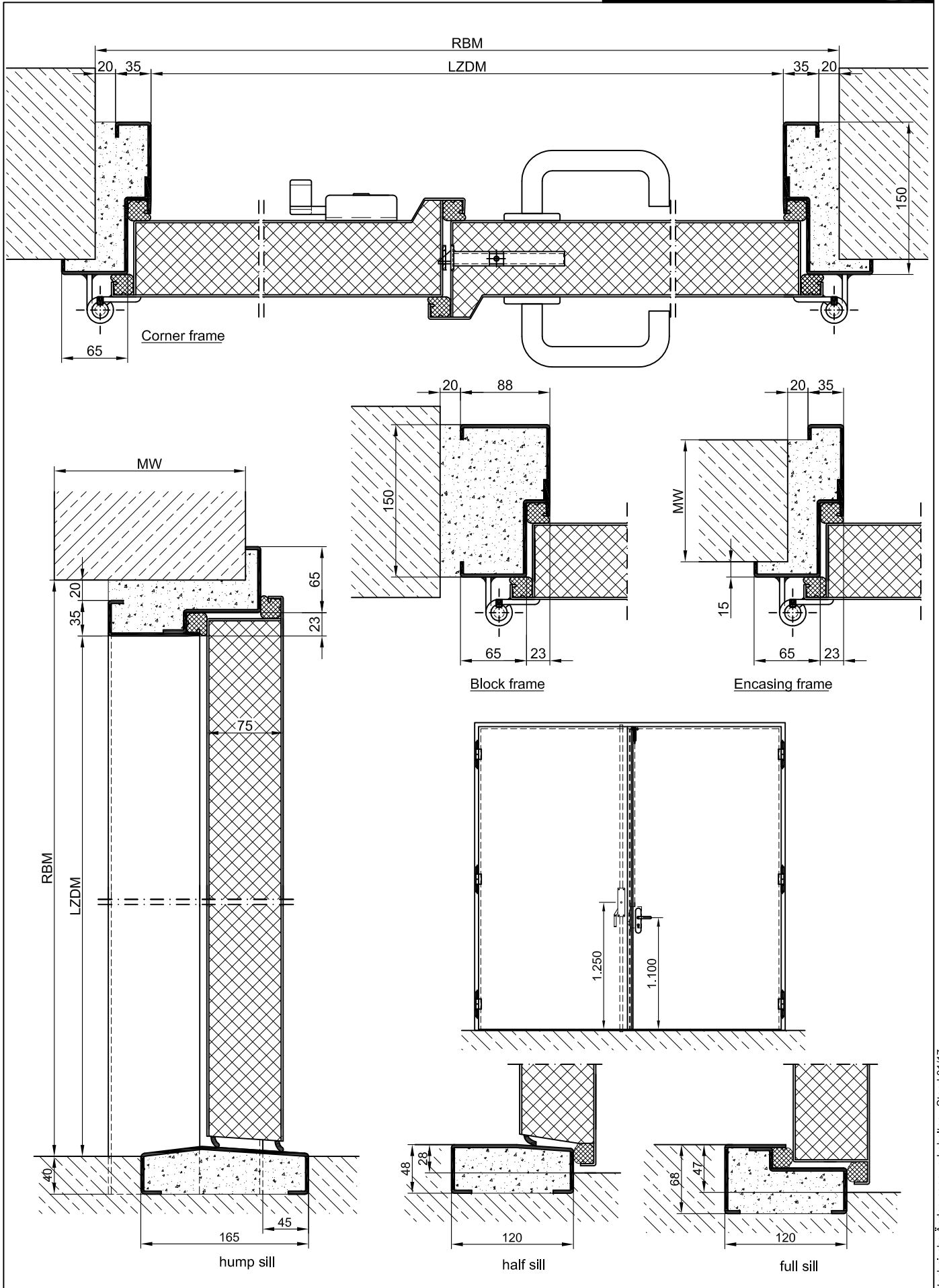
(* special options see back of page)

Technical specification and text for invitation to tender

- | | |
|---------------------------------------|---|
| Product: | STB 47-2 double wing acoustic steel door brand Buchele
In accordance with DIN EN ISO 10140-2 |
| Door Type: | STB 47-2 LIGHT Line |
| Noise controll R_{w,P} | 47 dB |
| Dimensions: | x mm |
| Door Leaf: | Double walled, level 75 mm thick steel door leaf without hinge embossing, three sides folded with thick rebate and adjustable fixed sealing profile in the fold. Without bottom stop.
Without bottom stop with duplex tow sealing system.
Special insulating inserts completely laid in and glued. |
| Sill: | Threshold profile barrier-free hump sill. Surface galvanized welded to the frame. |
| Frame: | 3-sided circumferential folded corner frame with high quality multi-chamber sealing profile adjustable fixed in the three sided groove. |
| Hinges: | Threepart height-adjustable construction hinges with hinge pin retention and ball-bearing spacer ring for smooth door movement. |
| Fitting: | Active door leaf with mortice lock with latch lever function (prepared for installation of a profile cylinder lock provided by customer).
Door handle set in accordance with DIN EN 1906 firmly installed turnable synthetic material black in U-shape with rounded short-plate.
Inactive door leaf with stationary wing with 2-point locking device and espagnolette with lever. |
| Surface: | Door leaf and frame galvanized and primed with one component primer similar RAL 7001. |
| Mounting: | Delivery and professional assembly including filling of the cavities in the frame with mortar of group III. |

Special Models

Standard Glazing:	Regular glazing – or insulated glazing (glazing freely selectable) held by profiled and visibly screwed steel glazing bars. Minimum frieze width 125 mm side and top, base 340 mm.
Airtight:	High-quality multi-chamber sealing profile adjustable fixed in the three sided groove of the frame in connection with a duplex tow sealing system or a stop seal.
Driving Rain Water tight:	High-quality multi-chamber sealing profile adjustable fixed in the three sided groove of the frame in connection with a duplex tow sealing system. or a stop seal.
Windproof	High-quality multi-chamber sealing profile adjustable fixed in the three sided groove of the frame in connection with a duplex tow sealing system. or a stop seal
Stainless Steel:	Material 1.4301 (V2A) or.1.4571 (V4A), Surface bright mill or brushed.



technische Änderungen vorbehalten - Stand 01/17