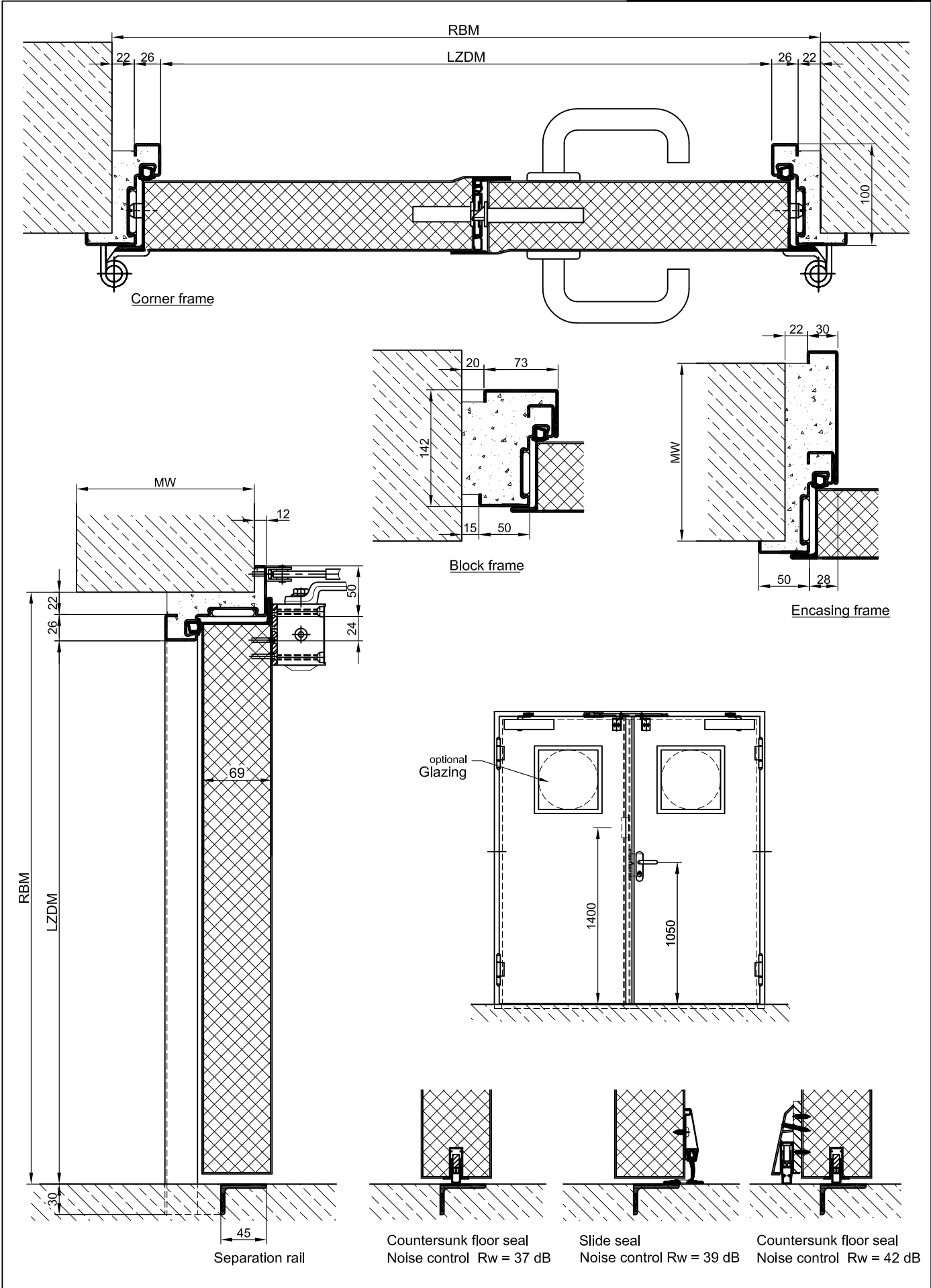




**Special Models**

<b>Smoke Protection:</b>	Drop seal or stop sill.
<b>Sound Insulation:</b>	Drop seal or stop sill.
<b>Burglary Protection:</b>	RC 2, RC 3 or RC 4 safety package with safety fitting.
<b>Glazing:</b>	F90 Fire protection glass, held by steel glass bars minimum frieze width circumferential 130 mm. max. glass size 940 x 1900 mm.
<b>Stainless Steel:</b>	Material 1.4301 (V2A) or. 1.4571 (V4A), Surface bright mill, brushed or mattet



technische Änderungen vorbehalten - Stand 01/17