

Double Wing T 30 Fire Retardant Security Steel Door

Fire Protection	T30	in accordance with DIN 4102
Burglar Proof	RC2/RC3/RC4	in accordance with DIN V ENV 1627

* Smoke Control	RS (S_m)	in accordance with DIN 18095
* Noise Control	up to R_w 42 dB	in accordance with DIN 52210
* Stainless steel		
Range of Dimensions:	Width from 1375 mm to 4250 mm	
	Height from 1750 mm to 4250 mm	

* (special options see back of this page)

Technical specification and text for invitation to tender

Product:	T30-2 double wing fire retardant steel door brand Buchele In accordance with DIN 4102
Door Type:	T30-2 TSN-2 (System Schröders)
Burglar Proof:	RC
Dimensions: x mm
Door Leaf:	Double walled, level 69 mm thick steel door leaf without hinge embossing, three sides folded with thin rebate without bottom stop. Special insulating inserts completely laid in and glued. Safety bolt screwed in door leaf fold.
Sill:	Floor bracket as separation bar. Surface galvanized and welded to the frame.
Frame:	3-sided circumferential folded corner frame with visible black coated intumescent material in fold. Sealing profile adjustable fixed in the three sided groove.
Hinges:	Threepart height-adjustable construction hinges with hinge pin retention and ball-bearing spacer ring for smooth door movement.
Door Closer:	2 pieces Standard arm door closer according to DIN EN 1154 silver colored mounted on hinge side. 1 piece door coordinator device
Fitting:	Active door leaf with 2-point safety locking system with latch lever function in accordance with DIN EN 12209 (prepared for installation of a profile cylinder lock provided by customer). Safety door handle set with DIN EN 18257 firmly installed turnable aluminium F1 in U-shape with rounded protective plate. Inactive door leaf with espagnolette bolt lock in the central rebate profile.
Surface:	Door leaf and frame galvanized and primed with one component primer similar RAL 7001.
Mounting:	Delivery and professional assembly including filling of the cavities in the frame with mortar of group III.

Installation: in brick wall ≥ 115 mm
in concrete ≥ 100 mm

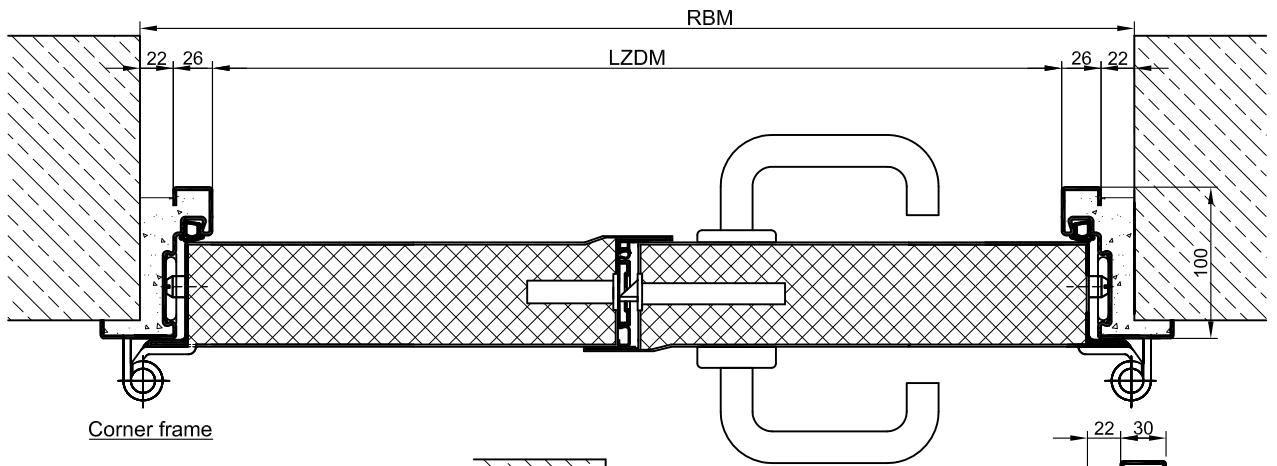
Special Models

Smoke Protection: Drop seal or stop sill.

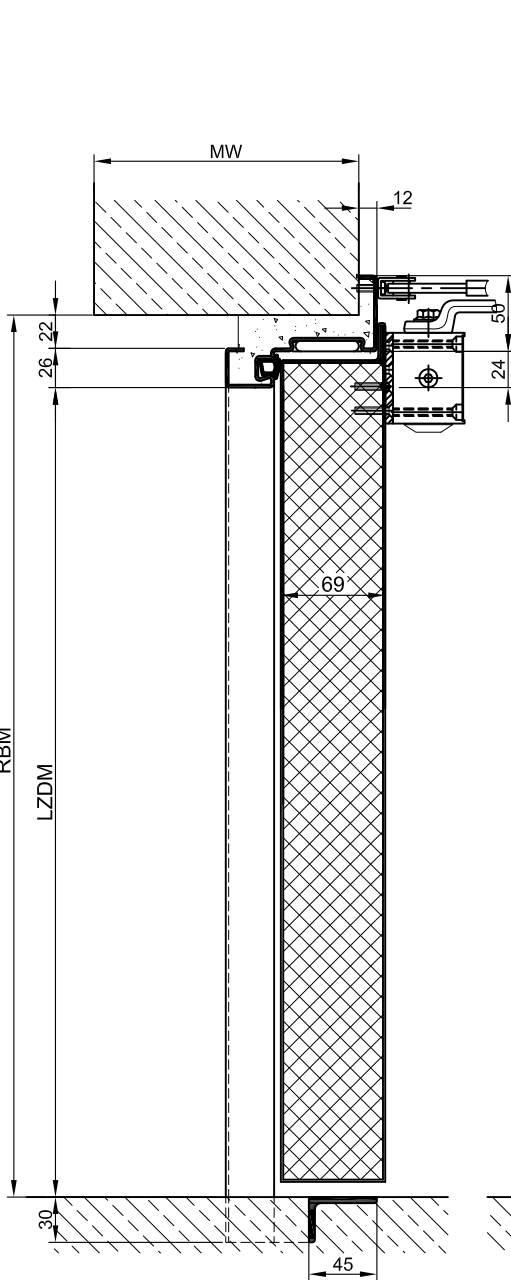
Sound Insulation: Drop seal or stop sill.

Glazing: F30 Fire protection glass, held by steel glass bars minimum frieze width circumferential 90 mm. max. glass size 940 x 2195 mm.

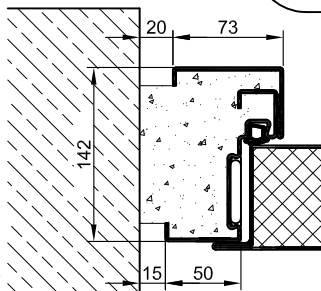
Stainless Steel: Material 1.4301 (V2A) or. 1.4571 (V4A),
Surface bright mill, brushed or mattet



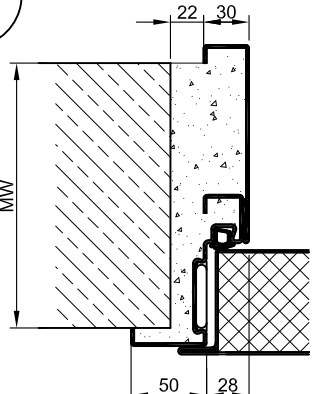
Corner frame



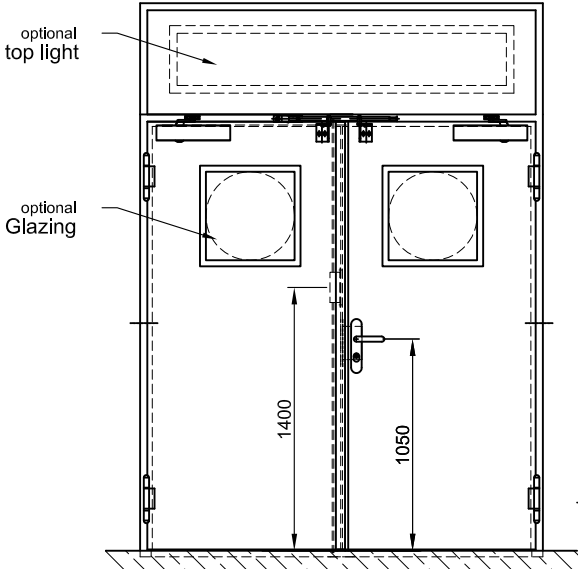
Separation rail



Block frame

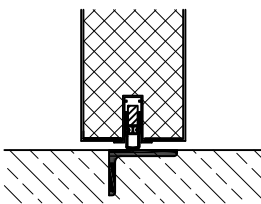


Encasing frame

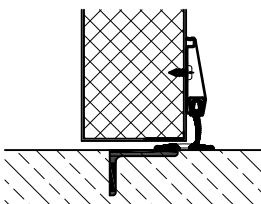


optional top light

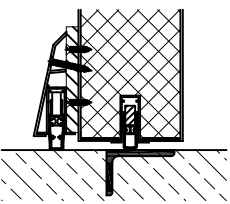
optional Glazing



Countersunk floor seal
Noise control $R_w = 37$ dB



Slide seal
Noise control $R_w = 39$ dB



Countersunk floor seal
Noise control $R_w = 42$ dB

technische Änderungen vorbehalten - Stand 01/17