

Double Wing Flood Protection Door**Water Tight up to 3,5 m WS (water column)**

(Waterside is on side of hinges)

* Stainless steel

Range of Dimensions:

Width from 1375 mm to 2500 mm

Height from 1500 mm to 2500 mm

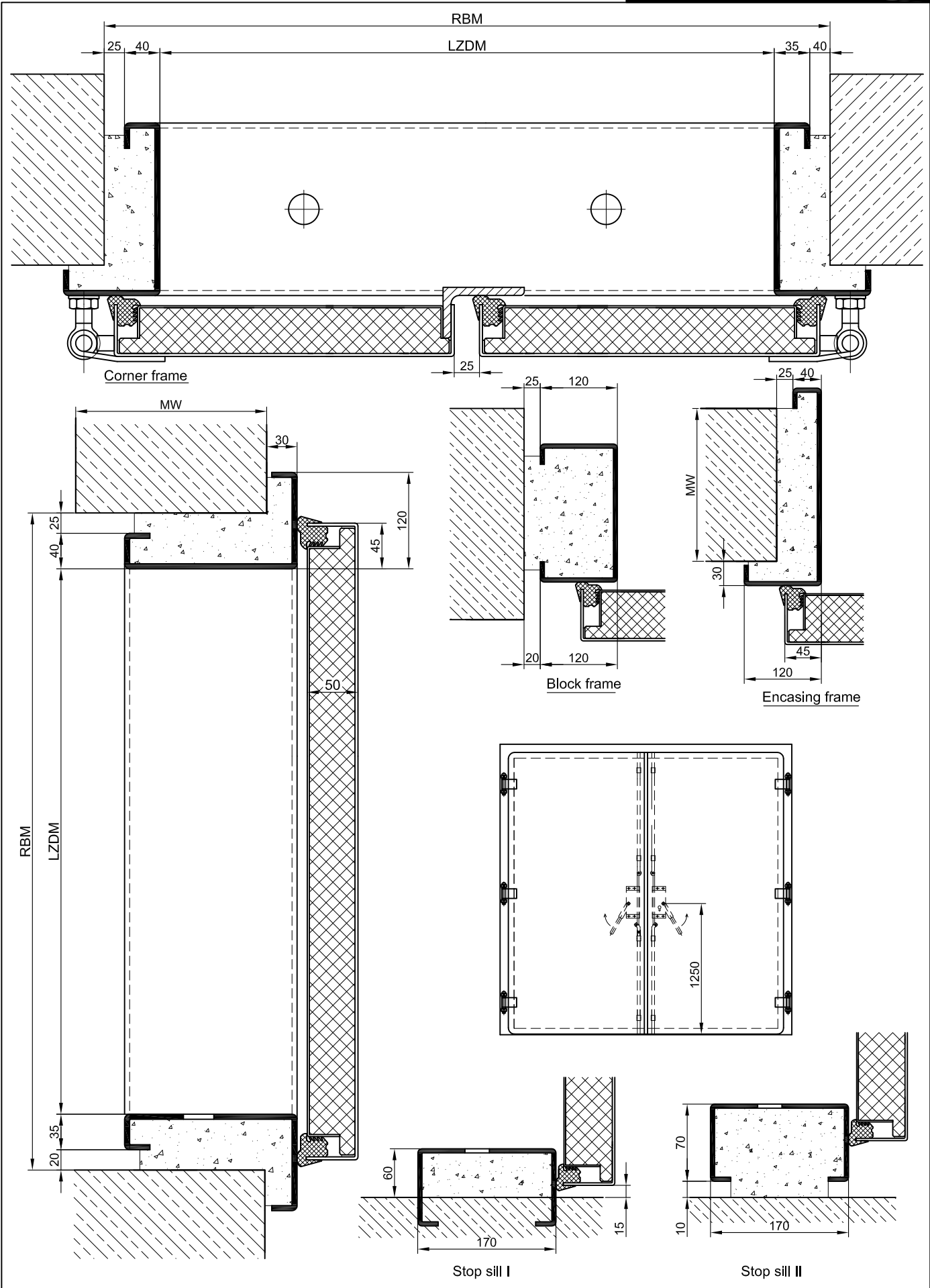
(* special options)

Technical specification and text for invitation to tender

Product:	HT 50-2 double wing flood protection door brand Buchele
Door Type:	HT 50-2
Water tight:	up to 3,5 m WS (waterside is on side of hinges)
Dimensions: x mm
Door Leaf:	Double walled, level 50 mm thick steel door leaf, four sides folded with thick rebate with high-quality multi-chamber sealing profile adjustable fixed in the four sided groove. Door leaf without insulation.
Frame:	4-sided circumferential folded corner frame.
Hinges:	Threepart height-adjustable construction hinges with hinge pin retention and ball-bearing spacer ring for smooth door movement.
Fitting Traffic Leaf:	4-point locking system with roller operated by a sturdy tension lever attached visible on the door leaf on the opposite side of the hinges..
Fitting Inactive Leaf:	4- point locking system with roller operated by a sturdy tension lever attached visible on the door leaf on the opposite side of the hinges.
Surface:	Door leaf and frame galvanized and primed with one component primer similar RAL 7001.
Mounting:	Delivery and professional assembly including filling of the cavities in the frame with mortar of group III.

Special Models

Stainless Steel:	Material 1.4301 (V2A) or. 1.4571 (V4A), Surface bright mill, brushed or mattet.
Additional equipment:	Drive bolt operated on both sides. Attached profile cylinder bolt lock for half cylinder opposite of hinges. (prepared for installation of a profile cylinder lock provided by customer).
Additional Equipment:	Thermally insulated door leaf with PU-foam filling



technische Änderungen vorbehalten - Stand 01/17