

**Double wing PLANE Line electro-magnetic-shielding door
for EMS, EMI and EMV purposes**

**Plane Optic
Shielding attenuation: 40 to 80 dB in accordance with IEEE 299**

patent-protected

* Fire Protection	EI₂30/60/90-SaC5	in accordance with DIN EN 1634-1
* Smoke Control	RS (S₂₀₀)	in accordance with DIN EN 1634-3
* Noise Control	up to R_{W,P} 54dB	in accordance with DIN EN ISO 10140-2
* Burglar Proof	RC2/RC3/RC4/RC5	in accordance with DIN EN 1627
* Shot Proof	FB4	in accordance with DIN EN 1522
* Air Tight	up to classification 4	in accordance with DIN EN 12207
* Rain and Fire Water Tight	Classification 6A	in accordance with DIN EN 1027
* Wind Tight	Classification C5	in accordance with DIN EN 12211
* Pressure Resistant	up to 18 kPa	
* Explosion Protection	up to zone 1/21	in acc. with DIN EN 1127-1 or ATEX 94/9/EG
* Stainless Steel		

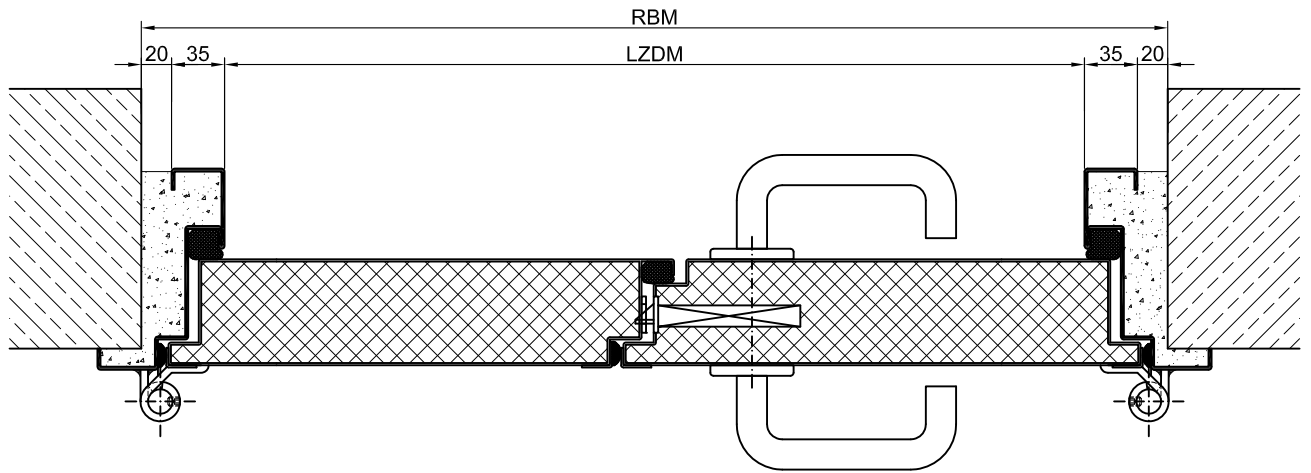
**Range of Dimensions: Width from 1375 mm to 3000 mm
Height from 1750 mm to 3000 mm**

* (special options see back of this page)

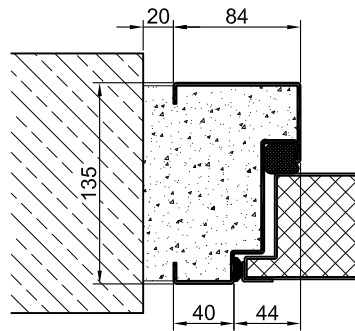
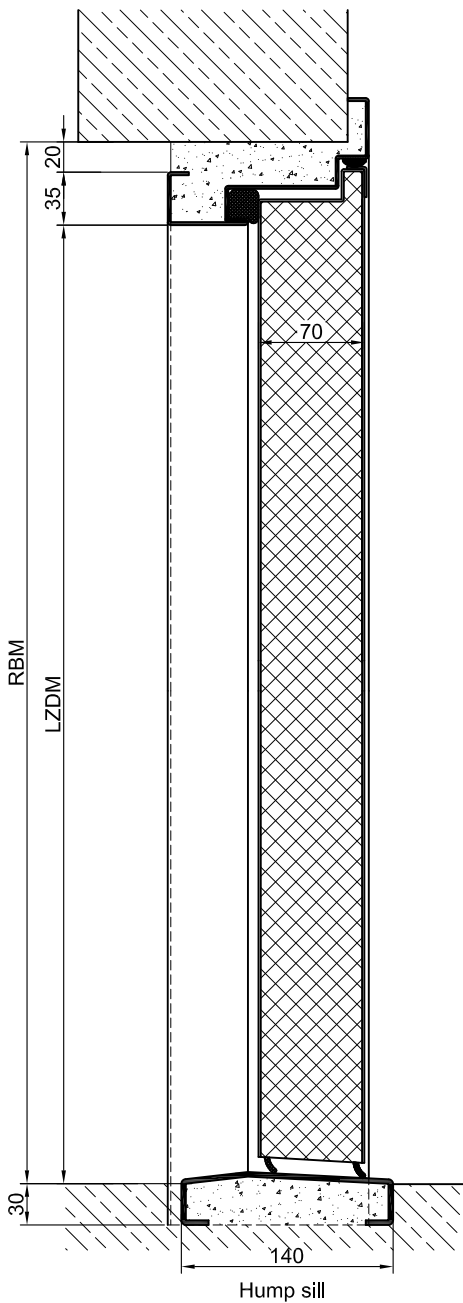
Technical specification and text for invitation to tender

Product:	PL 2 double wing electro-magnetic-shielding-door brand Buchele
Door Type:	PLANE Line PL 2 HF
Shielding attenuation:	40 to 80 dB between 100 kHz and 10 GHz
Dimensions: x mm
Door Leaf:	Double walled, level 70 mm thick steel door leaf without hinge embossing, three sides folded with thick rebate and stainless steel contact strips without bottom stop with tow sealing. Special insulating inserts completely laid in and glued. Safety bolt screwed in door leaf fold.
Sill:	Threshold profile barrier-free hump sill. Surface galvanized welded to the frame.
Frame:	Three sided circumferential folded PLANE Line special corner frame for flush mounted optics on hinge side. High-quality multi-chamber sealing profile adjustable fixed in the three sided groove and protective installed spring connector gaskets.
Hinges:	Threepart height-adjustable construction hinges with hinge pin retention and ball-bearing spacer ring for smooth door movement.
Fitting:	Active door leaf with mortice lock with latch lever function in accordance with DIN EN 12209 (prepared for installation of a profile cylinder lock provided by customer). Door handle set in accordance with DIN EN 1906 firmly installed turnable synthetic material black in U-shape with rounded short-plate.

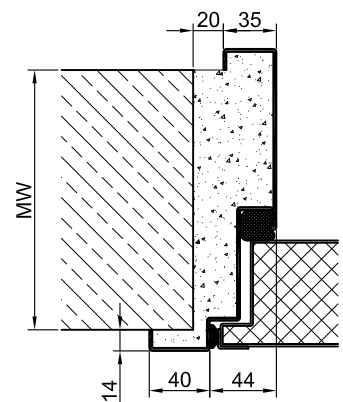
	Inactive door leaf with espagnolette bolt lock in the central rebate profile.
Surface:	Door leaf and frame galvanized and primed with one component primer similar RAL 7001.
Mounting:	Delivery and professional assembly including filling of the cavities in the frame with mortar of group III.
<u>Special Models</u>	
Fire protection:	EI _{230/60/90} -C5 in accordance with DIN EN 1634-1
Smoke Control:	RS (S ₂₀₀) in accordance with DIN EN 1634-3
Burglary Protection:	RC 2,RC 3,RC 4 or RC5 safety package with safety fitting.
Emergency Door:	With panic fitting in accordance with DIN EN 179 and 1125
Sound Insulation:	Up to R _{w,p} 54 dB
Bullet Proof:	FB 4 and FB 6 special inlay in door leaf and frame.
Airtight:	High-quality multi-chamber sealing profile adjustable fixed in the three sided groove of the frame in connection with a drop seal or a stop seal.
Driving Rain Water tight:	High-quality multi-chamber sealing profile adjustable fixed in the three sided groove of the frame in connection with a stop seal.
Windproof	High-quality multi-chamber sealing profile adjustable fixed in the three sided groove of the frame in connection with a stop seal.
Stainless Steel:	Material 1.4301 (V2A) or 1.4571 (V4A), Surface bright mill or brushed.



Corner frame



Block frame



Encasing frame

